

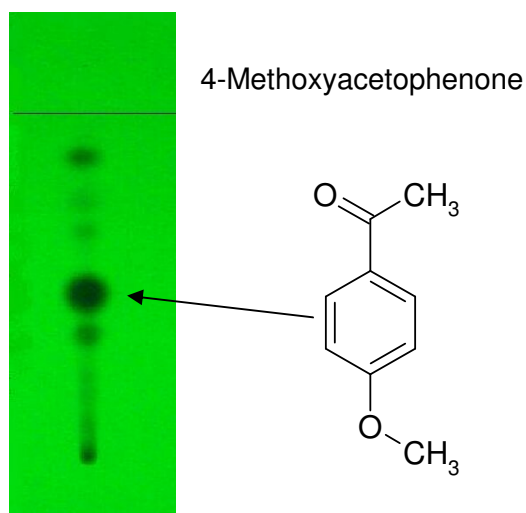
Isolation of 4-Methoxyacetophenone from a crude reaction mixture

Isocratic elution, using an additional polar solvent for sample loading.

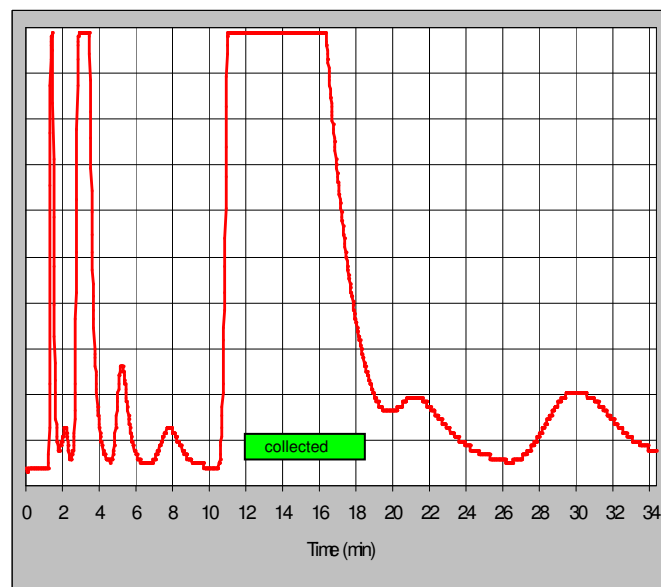
A. Talamona, BÜCHI Labortechnik AG

TLC of the crude reaction mixture:

TLC on silica gel Si60_{F254}, developed in n-hexane/isopropyl ether 1:1, detection UV 254 nm



Separation



Sepacore configuration

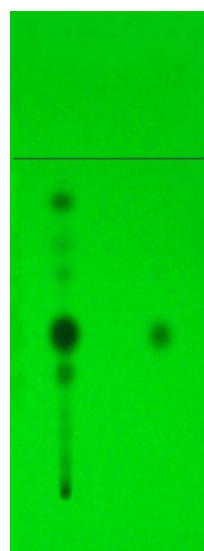
Cartridge 40 x 150mm, prepacked with silica gel 60, 40 – 63 µm
2 Pump Modules C-605
Fraction Collector C-660
Control-Unit C-620 with SepacoreControl software
UV Photometer C-635

Separation conditions

Eluent: n-hexane/isopropyl ether 7:3
Flow rate: 100 ml/min
Sample: 1.15 g brown oil, dissolved in 0.5 ml toluene *
Injection volume: 1.2 ml

* dissolved in toluene because of too low solubility of the crude reaction mixture in n-hexane/isopropyl ether 7:3. Toluene is eluted as front peak.

TLC-Check of the collected fraction



Silica gel Si60_{F254}, developed in n-hexane/isopropyl ether 1:1, detection UV 254 nm

Recovery

0.6 g white crystals, mp 38.5°C